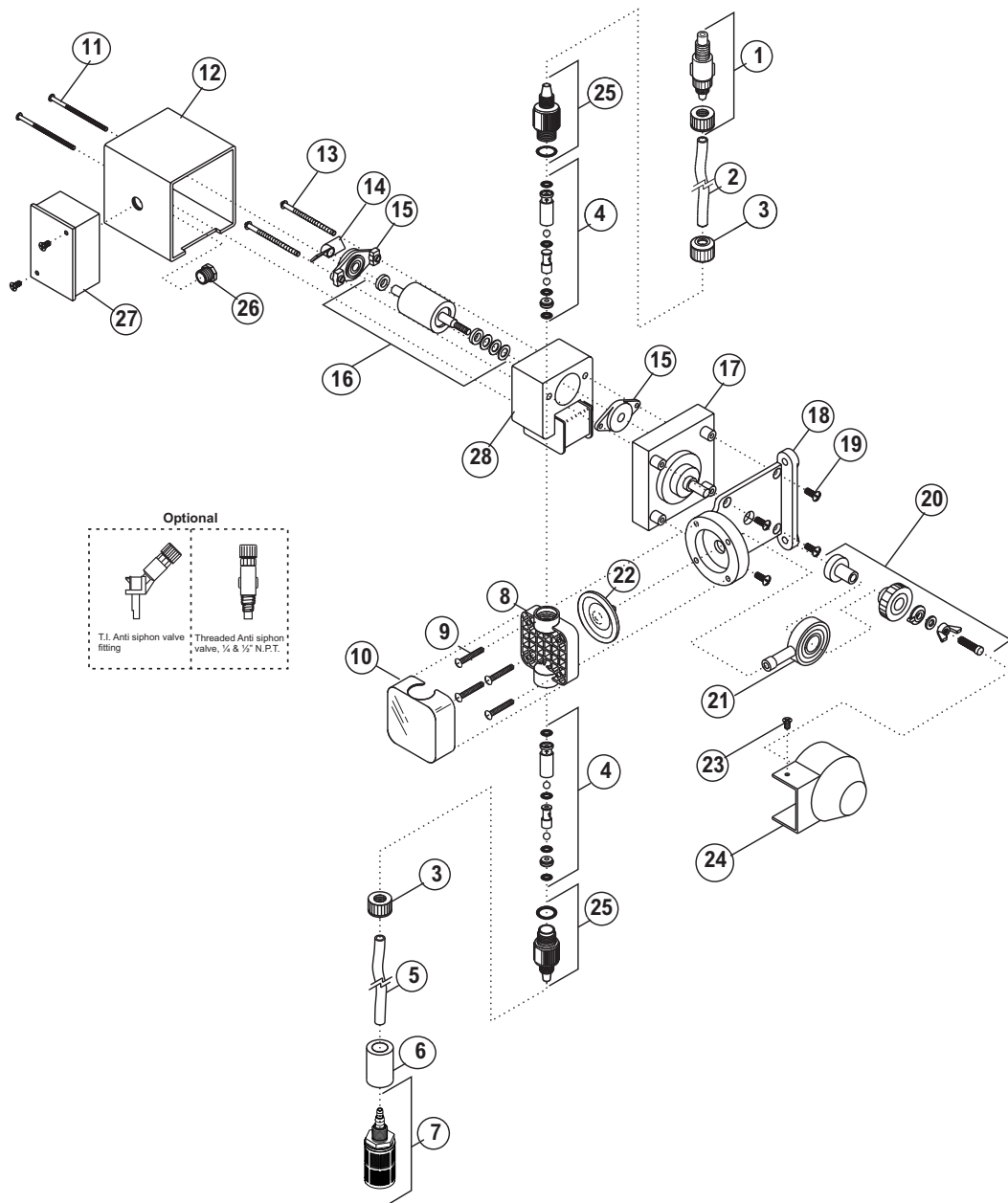


Exploded View

C-600P



C- 600P Parts List

| Catalog No. | Description | Amount Req'd. |
|---------------|---|---------------|
| 1. C-395N-6A | Injection valve 6 PSI, Aflas | 1 |
| C-395N-6E | Injection valve 6 PSI, EP (optional) | 1 |
| 2. C-335-6 | Discharge Tubing 3/8 OD, 5ft. Opaque Poly-E | 1 |
| 3. C-330-6 | Tube Nut | 2 |
| 4. K-568A-4 | Bullet valve (double ball), Aflas, 4 pack set | 2 |
| K-568A-10 | bullet valve (double ball), Aflas, 10 pack set | 2 |
| K-569E-4 | Bullet valve (double ball), EP, 4 pack set (optional) | 2 |
| K-569E-10 | Bullet valve (double ball), EP, 10pack set(optional) | 2 |
| 5. C-334-6 | Suction tubing 3/8' OD, 5ft. Clear PVC w/ indicator | 1 |
| 6. C-346 | Ceramic weight | 1 |
| 7. C-340A | Foot valve / strainer Poly-Pro, Aflas | 1 |
| C-340E | Foot valve / strainer Poly-Pro, EP (optional) | 1 |
| 8. C-535 | Heavy duty machined pump head | 1 |
| 9. C-504HD | Screw, HD Pump head 10-32 x 1-1/4' | 4 |
| 10. C-535FC | Pump head cover, Chem feed logo | 1 |
| 11. C-628 | Cover screw 6-32 x 2-3/4' Steel | 2 |
| 12. C-608P | Motor Cover | 1 |
| 13. C-625 | Motor screw 8-32 x 2-1/2' | 2 |
| 14. C-612F | Rotor Fan | 1 |
| 15. C-612PB | Rotor Bearing | 2 |
| 16. C-616PN | Rotor w/ Spacer | 1 |
| 17. C-618P-14 | Gearbox Assembly, 14 RPM | 1 |
| C-618P-30 | Gearbox Assembly, 30 RPM | 1 |
| C-618P-45 | Gearbox Assembly, 45 RPM | 1 |
| C-618P-60 | Gearbox Assembly, 60 RPM | 1 |
| C-618P-125 | Gearbox Assembly, 125 RPM | 1 |
| C-618P-250 | Gearbox Assembly, 250 RPM | 1 |
| 18. C-301 | Motor Mount | 1 |
| 19. C-624 | Motor Mount Screw 10-32 x 1/2' | 4 |
| 20. C-325 | Cam S/A C-600 | 1 |
| 21. C-304 | Yoke w/Bearings | 1 |
| 22. C-406T | Diaphragm PTFE coated, EP | 1 |
| 23. 90011-155 | Screw 6-332 x 3/8' | 1 |
| 24. 90002-201 | Cam Cover | 1 |
| 25. C-560-6E | Bullet Valve Adapter, EP O-ring | 2 |
| 26. 90007-515 | 1/2" Aluminum Chase Nipple | 1 |
| 27. C-308J | Junction Box Complete w/Cover and Gasket | 1 |
| 28. C-615P-1 | Stator S/A 115V/60Hz, blue-black (lead wires) | 1 |
| C-615P-2 | Stator S/A 230V/60Hz, red-black (lead wires) | 1 |
| C-615P-3 | Stator S/A 220V/50Hz, brown-blue (lead wires) | 1 |
| C-615P-4 | Stator S/A 24V/60Hz, blue-white (lead wires) | 1 |
| C-615P-5 | Stator S/A 24V/50Hz, white-white (lead wires) | 1 |
| C-615P-6 | Stator S/A 230V/60Hz, red-yellow (lead wires) | 1 |
| C-615P-8 | Stator S/A 220V/50Hz, brown-yellow (lead wires) | 1 |
| C-615P-9 | Stator S/A 115V/60Hz, blue-yellow (lead wires) | 1 |
| C-615P-10 | Stator S/A 240V/50Hz, orange-yellow (lead wires) | 1 |
| C-615P-11 | Stator S/A 240V/50Hz, orange-white (lead wires) | 1 |